

50°49'15"O 47°49'0"O 44°48'45"O 41°48'30"O 38°48'15"O 35°48'0"O 32°47'45"O 29°47'30"O

2°52'45"S

5°53'0"S

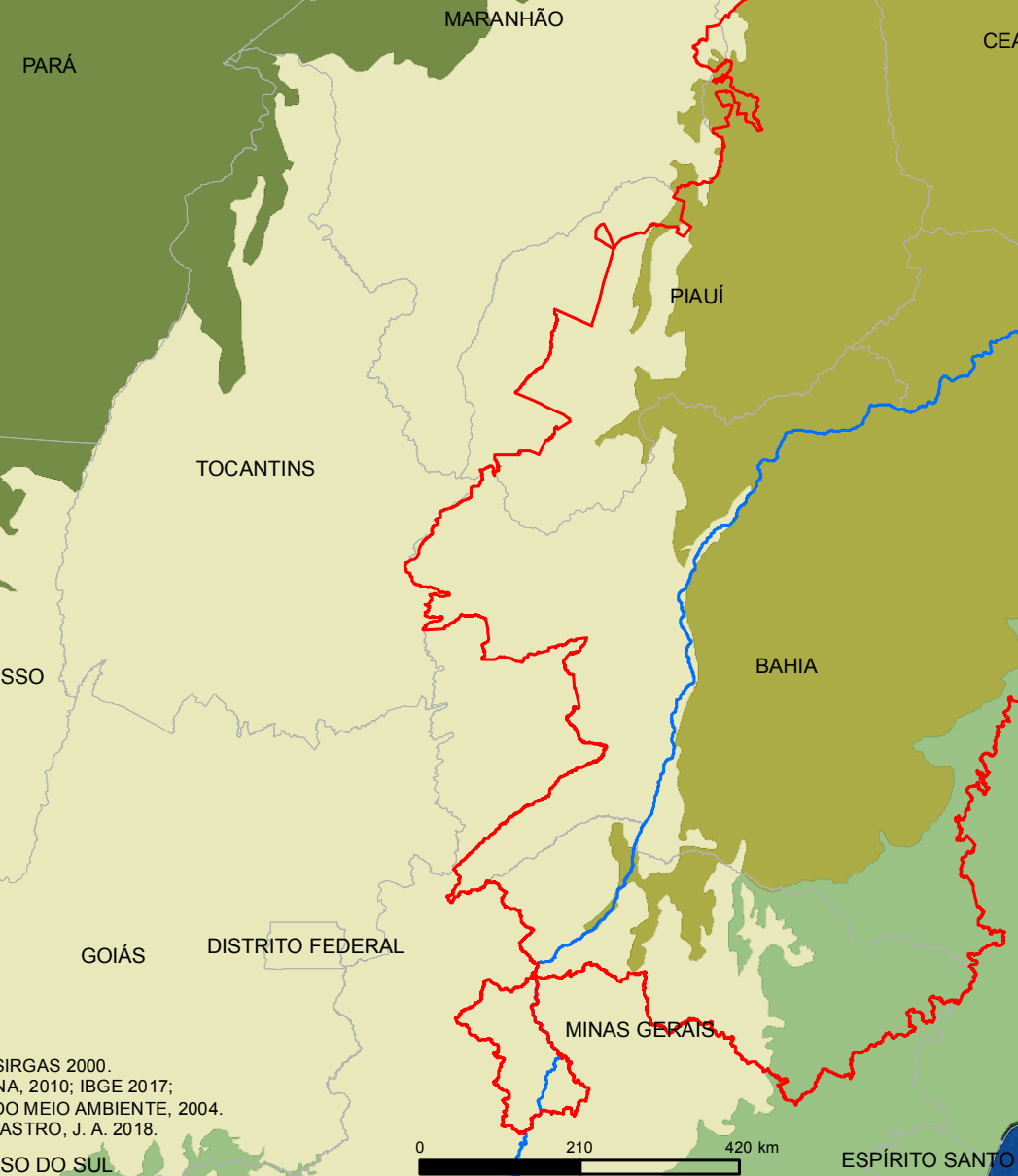
8°53'15"S

11°53'30"S

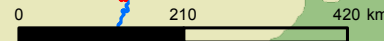
14°53'45"S






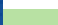
17°54'0"S

BIOMAS SEMIÁRIDO BRASILEIRO



SIRGAS 2000.
Fonte ANA, 2010; IBGE 2017;
MINISTÉRIO DO MEIO AMBIENTE, 2004.
Org.: CASTRO, J. A. 2018.



-  Rio São Francisco
-  Semiárido Brasileiro
-  Amazônia
-  Caatinga
-  Cerrado
-  Mata Atlântica

50°49'15"O 47°49'0"O 44°48'45"O 41°48'30"O 38°48'15"O 35°48'0"O 32°47'45"O 29°47'30"O

2°52'45"S

5°53'0"S

8°53'15"S

11°53'30"S

14°53'45"S

17°54'0"S